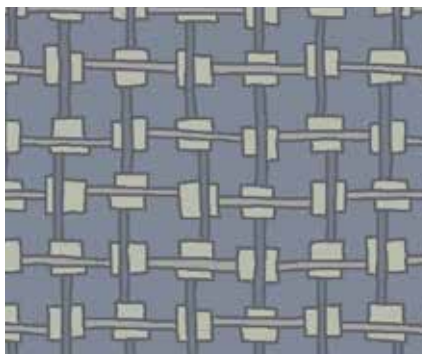
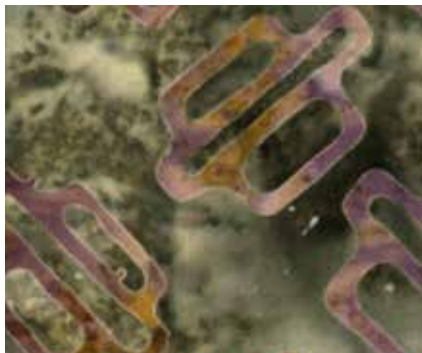


# Double Vision

FABRICS BY JOANIE MORROW



Between the Lines  
Quilt Design: **Joanie Morrow**

Quilt Size: **75" x 75"**

[andoverfabrics.com](http://andoverfabrics.com)

## About Double Vision

This fabric collection is inspired and directly linked to a pattern series I designed and continue to build on. DoubleVision is about the immediate impact of dark and light principles of design combined with my obsession of simple basic geometric shapes...boldly delivered through printed and batik fabrics designed hand-in-hand. — *Joanie Morrow*

andover



makower uk  
*The Henley Studio*

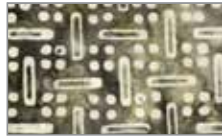
Free Pattern Download Available

1384 Broadway New York, NY 10018  
Tel. (800) 223-5678 • [andoverfabrics.com](http://andoverfabrics.com)

Batik



5001-4 ¼ yd



5001-14 ¼ yd



5003-170 ¼ yd



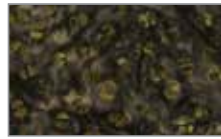
5003-264 ¼ yd



5008-210 ⅛ yd



5011-266 ¼ yd



5016-56 ¼ yd



5020-91 ¼ yd



5021-206 ¼ yd



5021-263 ⅛ yd



5022-253 ⅛ yd



5022-256 ¼ yd



5024-226 ¼ yd



5024-258 ¼ yd



5028-105 ¼ yd



5030D-257 ¼ yd



5031D-254 ⅛ yd



5031D-260 ¼ yd



5032D-70 ⅛ yd



5032D-99 ¼ yd



5033D-60 ¼ yd



5034-D-89 ⅛ yd



5034D-165 ¼ yd



5034D-187 ⅛ yd



5036D-251 ⅛ yd



5037D-252 ⅛ yd



5038D-255 ¼ yd



FABRICS 10 KITS 20 KITS 30 KITS

FABRICS	10 KITS	20 KITS	30 KITS
7414-P	1	2	2
FROM EACH	1	1	1
5001-4	5001-14	5003-170	
5003-264	5008-210	5011-266	
5016-56	5020-91	5021-206	
5021-263	5022-253	5022-256	
5024-226	5024-258	5028-105	
5030D-257	5031D-254	5031D-260	
5032D-70	5032D-99	5033D-60	
5034D-89	5034D-165	5034D-187	
5036D-251	5037D-252	5038D-255	
7414-C	*7414-N	7415-C	7415-N
7415-P	7416-C	7416-N	7416-P
7417-C	7417-N	7417-P	7418-C
7418-N	7418-P	7419-C	7419-N
7419-P			

BACKING FABRIC

*7414-N	4	7	10
---------	---	---	----

YARDAGE FOR BACKING:  
4¾ YDS PER KIT

Fabrics shown are 25% of actual size.  
All fabrics are used in quilt pattern.

Cotton



7414-C ¼ yd



7414-N ⅛ yd  
(extra yds needed for backing)



7414-P 1 yd  
(includes binding)



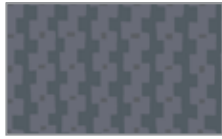
7415-C ¼ yd



7415-N ⅛ yd



7415-P ¼ yd



7416-C ¼ yd



7416-N ⅛ yd



7416-P ¼ yd



7417-C ¼ yd



7417-N ⅛ yd



7417-P ¼ yd



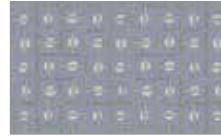
7418-C ¼ yd



7418-N ⅛ yd



7418-P ¼ yd



7419-C ¼ yd



7419-N ⅛ yd



7419-P ¼ yd

# Double Vision

FABRICS BY JOANIE MORROW

andover

makower uk  
*The Henley Studio*